



# Phantom River View



## Kings Gift ★★★★★

Sleeps a total of **6 people**

- 1 Room with double bed**
- 1 Room with 2 single beds**
- 1 Loft with 2 single beds**
- 1 Bathroom with bath**
- 2 Bathrooms with shower**

- \* Private Pool
- \* Braai / Barbeque
- \* Indoor Fireplace
- \* Satellite TV
- \* DVD Player
- \* CD Player
- \* Weber
- \* Travel Cot

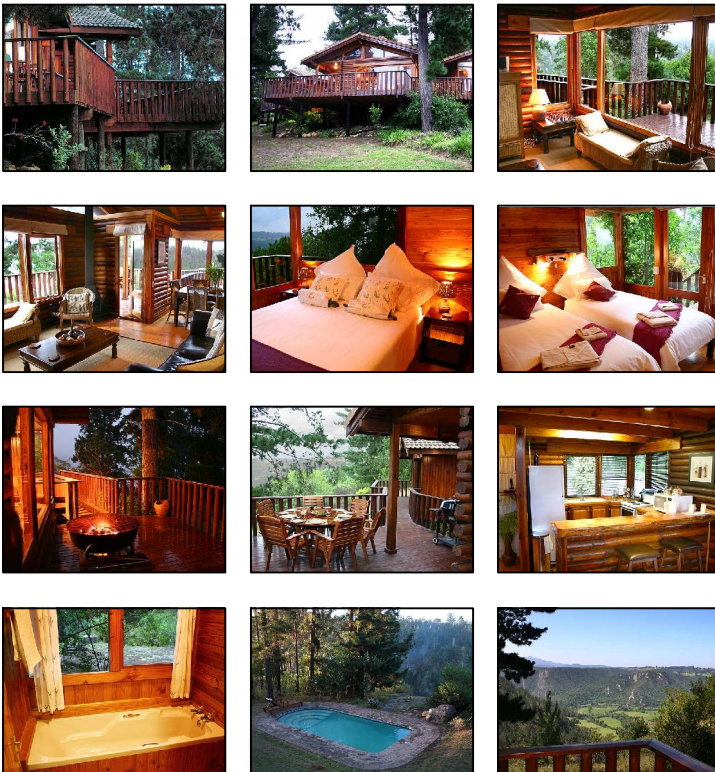
**King's Gift** self-catering holiday accommodation has to be experienced to be believed. It is truly magnificent. Picture this... forest views that stretch on forever, peace and quiet, interrupted only by the charming sounds of nature, the most comfortable wooden cabin that you can call home and the promise of lazy evenings around a fire.

Step inside and you'll be delighted to find adequate bedrooms (and bathrooms) to **accommodate 6 guests**. That's right, the main bedroom, known as the "Lavender Room", has a double bed, en-suite bathroom with a bath and a private entrance onto the outside deck, with breathtaking views of the valley.

The west wing bedroom also has an en-suite bathroom with shower and its two single beds can easily be pushed together if need be. The loft bedroom has an additional two single beds – **ideal for the kids!**

You'll really be able to sit back and put your feet up in the cosy open-plan lounge and dining area, where satellite TV and DVD and CD players add to the entertainment value. Prepare a feast in the **fully-equipped kitchen** or socialise with a glass of your favourite wine around a log fire.

For sunny days and warm evenings, dine outside on the deck. Or cook on the outdoor braai/barbeque, under a canopy of pine trees, near **your very own sparkling pool**. This outdoor area is perfect for sundowners after a laid-back day.



### PLEASE NOTE: General Information

- » Check in time: 14:00
- » Check out time: 10:00
- » Fresh linen and towels provided.
- » Tea, coffee and sugar provided.
- » You need to supply your own food, drinks and firewood/charcoal.
- » No pets allowed.
- » No cleaning service. Only available after 7 nights or more.